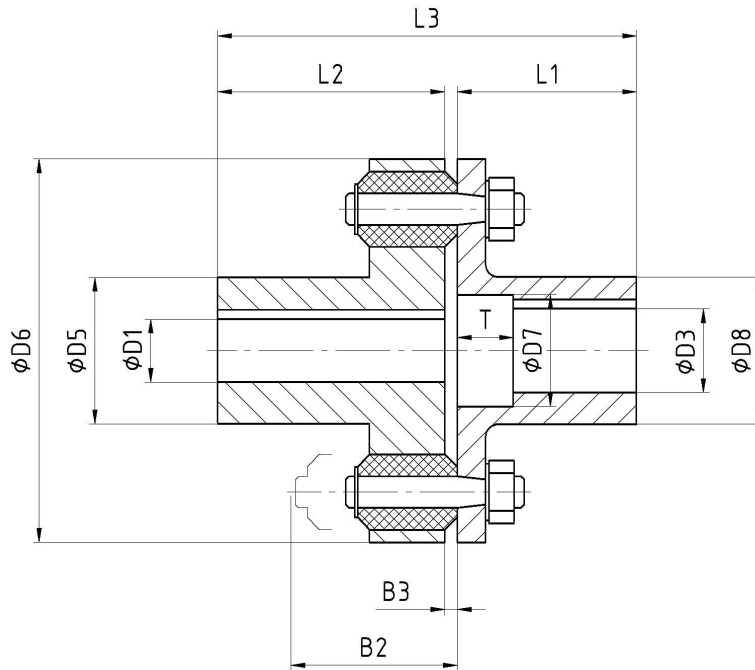


Type B:
for horizontal or
vertical assembly



| nominal size | torque ¹⁾ [Nm] | | D1 ²⁾ | | D3 max | D4 ³⁾ | D5 | D6 | D7 max | T | L1 | L2 | L3 | B2 | B3 (±25%) | moment of inertia ⁴⁾ J [kgm ²] | weight ⁴⁾ m [kg] | permissible speed ⁵⁾ n _{max} [rpm] | cushions and pins | |
|--------------|---------------------------|--------------------|------------------|-----|--------|------------------|-----|-----|--------|----|-----|-----|-----|-----|-----------|---|-----------------------------|--|-------------------|--------|
| | T _{KN} | T _{KNmax} | min | max | | | | | | | | | | | | | | | nominal size | number |
| 4 | 40 | 60 | 18 | 32 | 18 | 45 | 42 | 82 | 35 | 14 | 50 | 40 | 93 | 41 | 3 | 0,001 | 1,2 | 5000 | 6 | 4 |
| 6,3 | 63 | 95 | 18 | 38 | 22 | 52 | 50 | 90 | 43 | 18 | 60 | 50 | 113 | 41 | 3 | 0,001 | 1,7 | 4600 | 6 | 6 |
| 10 | 100 | 150 | 18 | 42 | 32 | 58 | 56 | 98 | 50 | 22 | 80 | 50 | 133 | 41 | 3 | 0,002 | 2,2 | 4300 | 6 | 8 |
| 16 | 160 | 240 | 18 | 45 | 32 | 62 | 60 | 112 | 50 | 22 | 80 | 60 | 143 | 57 | 3 | 0,003 | 3,2 | 4050 | 8 | 8 |
| 25 | 250 | 375 | 20 | 48 | 38 | 70 | 65 | 118 | 64 | 28 | 110 | 60 | 175 | 59 | 5 | 0,004 | 4,1 | 3850 | 8 | 10 |
| 40 | 400 | 600 | 22 | 55 | 38 | 78 | 70 | 135 | 64 | 28 | 110 | 80 | 195 | 72 | 5 | 0,007 | 5,8 | 3650 | 10 | 10 |
| 63 | 630 | 950 | 22 | 65 | 48 | 92 | 85 | 150 | 78 | 28 | 110 | 80 | 195 | 72 | 5 | 0,014 | 7,6 | 3500 | 10 | 12 |
| 100 | 1000 | 1500 | 28 | 75 | 60 | 95 | 95 | 182 | 92 | 35 | 140 | 90 | 235 | 92 | 5 | 0,038 | 13,8 | 3350 | 14 | 8 |
| 160 | 1600 | 2400 | 32 | 85 | 70 | 120 | 115 | 205 | 105 | 35 | 140 | 110 | 255 | 92 | 5 | 0,067 | 19,0 | 3200 | 14 | 10 |
| 250 | 2500 | 3750 | 42 | 95 | 80 | 135 | 130 | 230 | 119 | 40 | 170 | 110 | 285 | 107 | 5 | 0,098 | 27,3 | 3100 | 16 | 12 |
| 400 | 4000 | 6000 | 45 | 110 | 80 | 145 | 145 | 275 | 119 | 40 | 170 | 110 | 285 | 127 | 5 | 0,221 | 40,9 | 3000 | 22 | 10 |
| 630 | 6300 | 9500 | 90 | 120 | 90 | 165 | 165 | 320 | 146 | 45 | 210 | 170 | 388 | 130 | 8 | 0,492 | 64 | 2700 | 22 | 12 |
| 1000 | 10000 | 15000 | 90 | 130 | 100 | 175 | 175 | 380 | 159 | 45 | 210 | 170 | 388 | 150 | 8 | 0,782 | 85 | 2300 | 30 | 10 |
| 1600 | 16000 | 24000 | 90 | 160 | 110 | 210 | 210 | 440 | 178 | 45 | 210 | 210 | 430 | 165 | 10 | 1,78 | 128 | 2000 | 30 | 12 |

1) torsion angle at T_{KN} $\varphi = 3^\circ \pm 1^\circ$

2) finished boring to ISO-fit H7, keyway to DIN 6885 P1 fit JS9, other diameter on request

3) true for D1 max, in case of smaller boring a reduction is possible

4) true for D1 max, in consideration of buffers and pins

5) higher speed on request

dimensions in mm

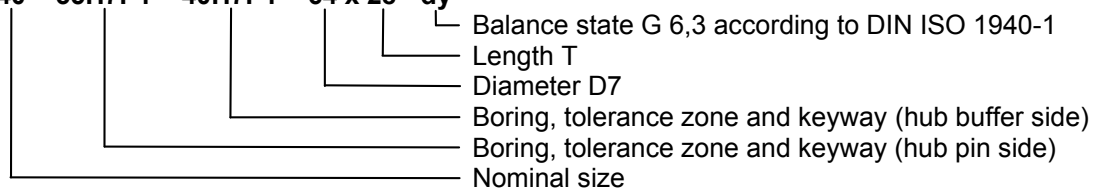
Material of standard type

Hub buffer side, hub pin side: C35 or GS52
Pin: C35, 34CrMo4, 34Cr4
Buffer: PUR (Elastopal)65±5 Shore A
PUR (Elastollan)80±2 Shore A

In special case of operation or by customer request it is possible to apply other material.

Order example:

EBK B 40 – 35H7P1 – 40H7P1 – 64 x 28 - dy



All data subject to change without notice