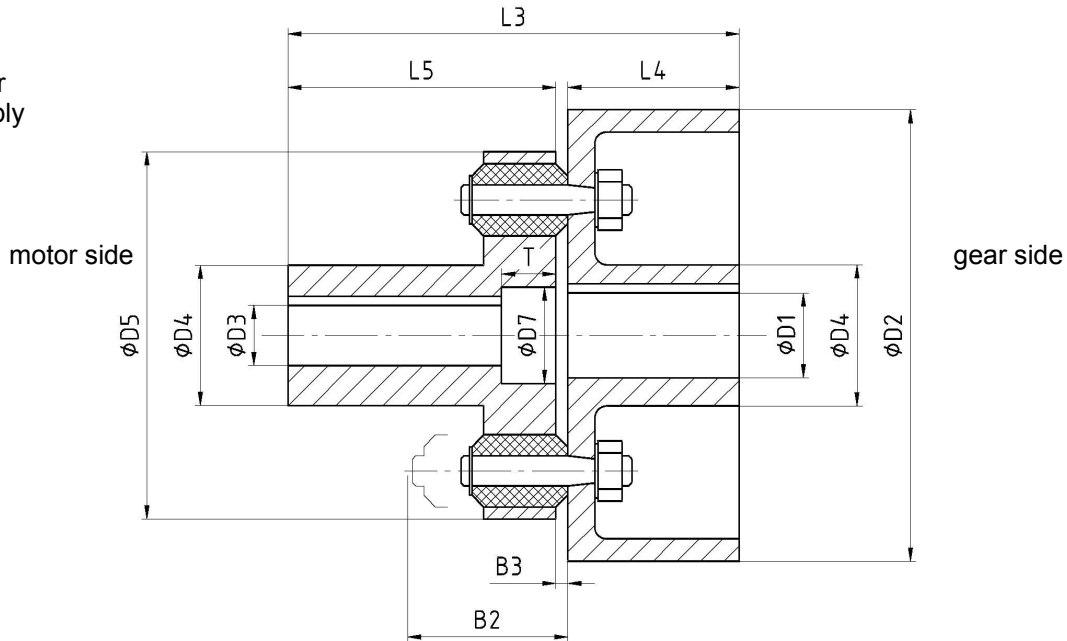


Type D:
for horizontal or
vertical assembly



nominal size	D2	torque ¹⁾ [Nm]		D1 ²⁾		D3 ²⁾ max	D4 ³⁾	D5	D7 max	T	L3	L4	L5	L6	B2	B3 (±25%)	moment of inertia ⁴⁾ J [kgm²]	weight ⁴⁾ m [kg]	permissible speed ⁵⁾ n _{max} [rpm]	cushions and pins	
		T _{KN}	T _{Kmax}	min	max															nominal size	number
16	200 250	160	240	18	45	32	65	123	50	22	163	80	80	65 80	57	3	0,04 0,11	8 12	3000	8	8
40	200 250 320	400	600	22	55	38	78	151	64	28	215	100	110	65 80 100	70	3	0,05 0,11 0,32	12 15 21	3000	10	10
100	250 320 400	1000	1500	28	75	60	108	198	92	35	255 255 285	110 110 140	140	80 100 125	92	5	0,15 0,39 1,04	23 29 46	3000 3000 2400	14	8
250	320 400 500	2500	3750	42	95	80	145	250	119	40	315 315 345	140 140 170	170	100 125 160	107	5	0,49 1,36 3,66	48 72 103	3000 2400 1900	16	12
630	500 630	6300	9500	90	120	90	165	320	146	45	388 428	170 210	210	160 200	130	8	6,58 10,25	115 156	1900 1500	22	12
1000	710	10000	15000	90	130	100	175	380	159	45	443	225	210	225	150	8	18,80	245	1350	30	10
1600	710	16000	24000	90	160	110	210	440	178	45	445	225	210	225	165	10	19,54	255	1350	30	12

1) torsion angle at T_{KN} φ=3°±1°

2) finished boring to ISO-fit H7, keyway to DIN 6885 P1 fit JS9, other diameter on request

3) true for D1 max, in case of smaller boring a reduction is possible

4) true for D1 max, in consideration of buffers and pins

5) higher speed on request

dimensions in mm

Material of standard type

Hub buffer side, hub pin side:

Brake drum:

Pin:

Buffer:

C35 or GS52

according to DIN 15437

C35, 34CrMo4, 34Cr4

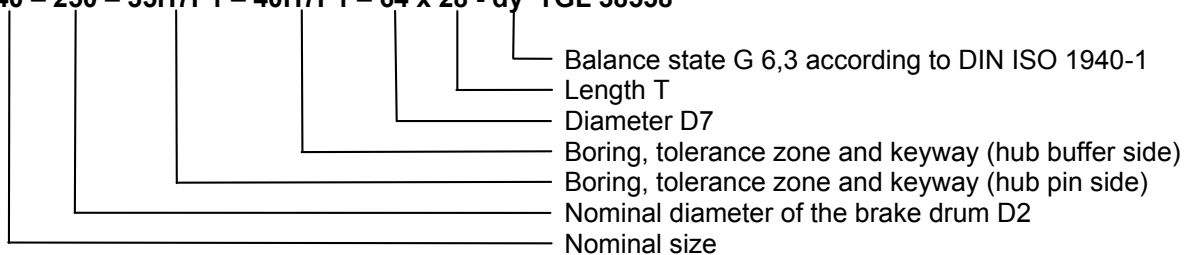
PUR (Elastopal)65±5 Shore A

PUR (Elastollan)80±2 Shore A

In special case of operation or by customer request it is possible to apply other material.

Order example:

EBK D 40 – 250 – 35H7P1 – 40H7P1 – 64 x 28 - dy TGL 38558



All data subject to change without notice