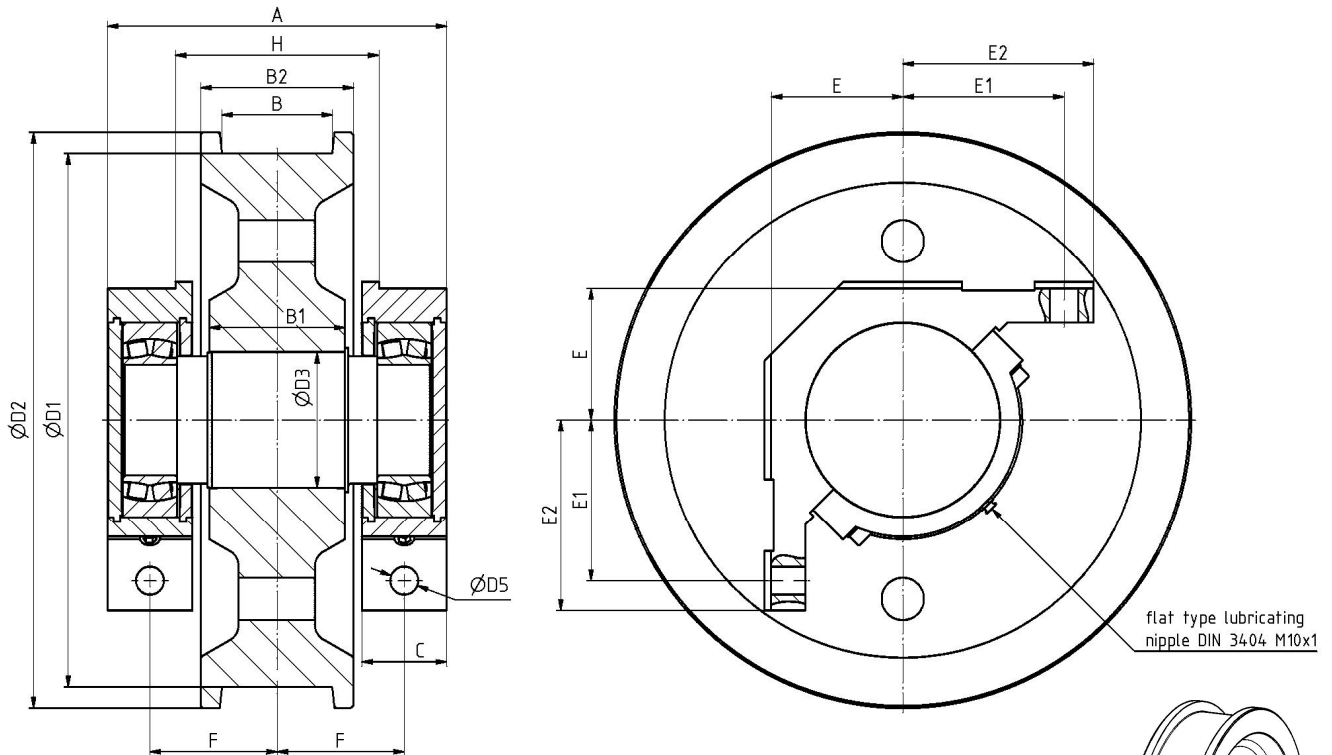
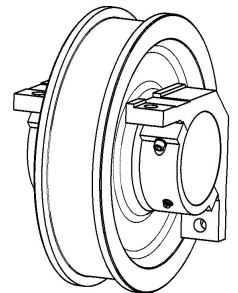


### Dimensions



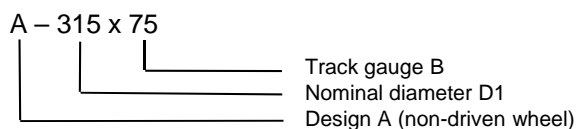
- Material: wheel and axis 42CrMo4V, other material on request
- Assembly axis - wheel as interference fit assembly by shrinkage according to DIN 15090
- Spherical roller bearing according to DIN 635
- Installation material to assembly the crane wheel not included in delivery, available on request.
- After assembly bearing housing must be filled complete with roller bearing grease.
- Wheels also in design BHKE, BHKD, BGKE and BGKD according to DIN 15093 available
- Surface hardening of wheel tread and internal side of flange optional



D1	D2	D3	D5	B1	B2	A	H	F	C	E	E1	E2	B		bearing DIN 635	weight [kg]
													min	max		
315	350	110	23	110	130	330	185	120	90	120	135	160	50	90	223 16	140
400	440	120	23	140	160	330	205	125	80	125	145	170	60	120	222 20	200
500	540	130	27	140	160	345	210	130	85	140	160	190	60	120	222 22	280
630	680	160	33	160	180	400	240	150	100	155	190	225	70	130	222 26	500
710	760	170	33	210	210	435	265	165	105	165	200	235	70	160	222 28	700
800	850	180	33	210	210	469	285	175	120	180	210	245	70	160	222 30	870

All dimensions in mm  
Weight is approximate declaration

#### Example of identification:



- Available on request:
- allowed wheel pressure
  - 2D- drawing
  - 3D- model

Subject to change without notice