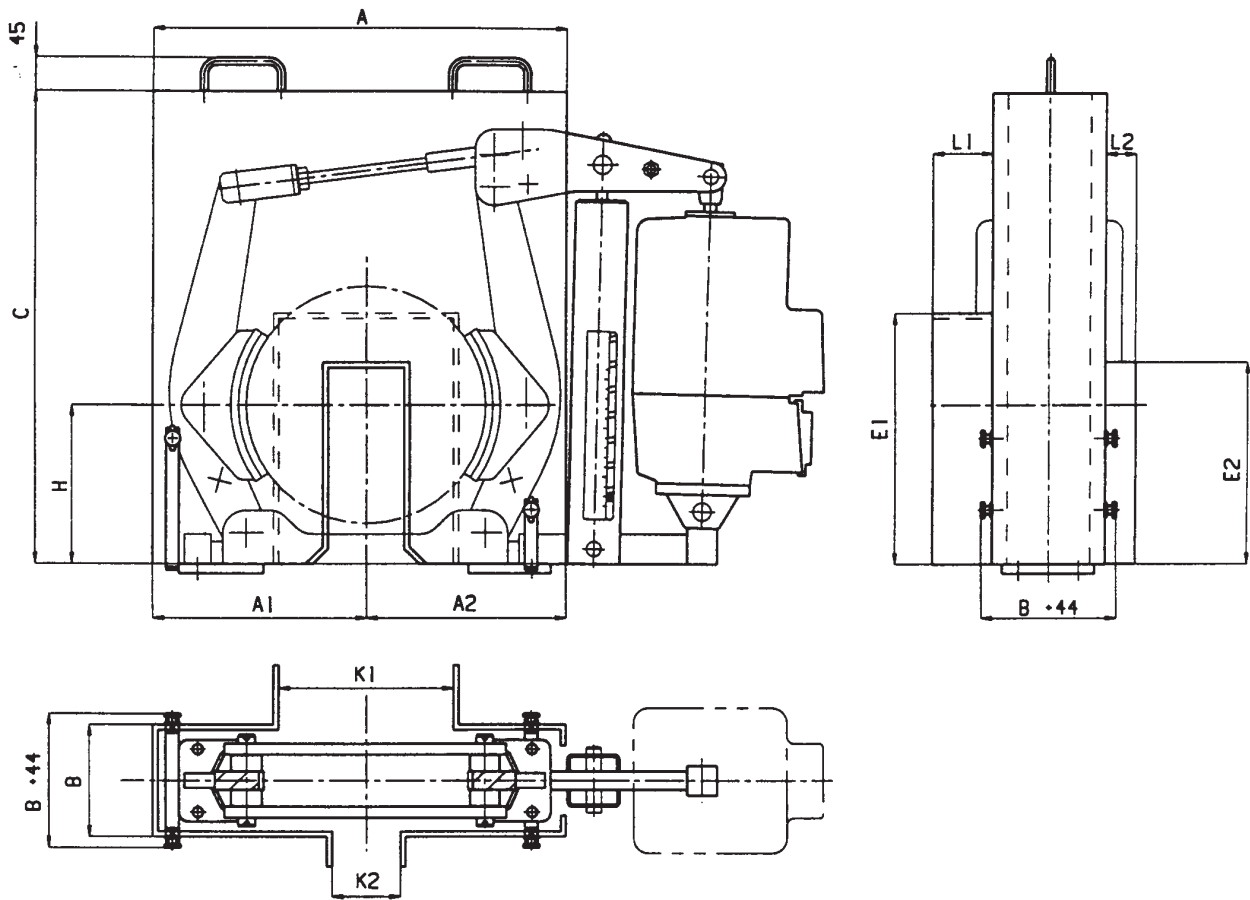


# Cover hood

for drum brake according to DIN 15435, series RT and EB, nominal size 400 - 710



- Fastening of the cover on the brake base frame with knurled screws.
- Envelope dimensions A, A1, A2, B and C are only for the basic versions RT and EB. These dimensions must be redefined for other versions, e.g., RTR or RTC or special versions.
- If no protection cap is provided or a fully closed side wall is installed, please enter "0" in the appropriate columns E, K and/or L.
- All dimensions are in millimeters.

All data subject to change without notice

drum brake	A	A1	A2	B	C	H	E1	E2	K1	K2	L1	L2
RT/EB 400- 23/5- 80/6	710	360	350	200	690	258						
RT/EB 400-121/6-201/6	710	360	350	200	810	258						
RT/EB 500- 50/6-201/6	830	415	415	234	878	318						
RT/EB 630-121/6-301/6	1020	510	510	280	1050	377						
RT/EB 710-121/6-301/6	1140	570	570	324	1146	448						

edition 9/2002