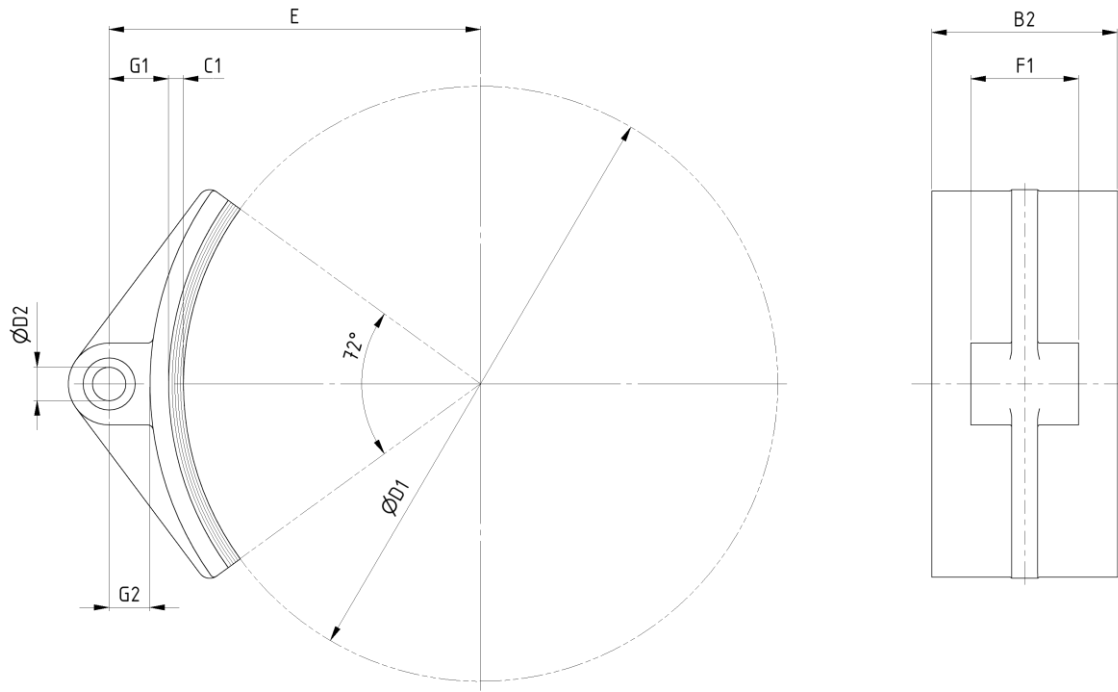


## Brake Shoes

according to TGL 38304

edition 11/2020 | EN  
page 1 / 1



ordering example: brake shoe TGL 38304 - D1 - 131 <sup>1)</sup> - riveted

dimension in [mm]

### Data

D1	B2	C1	D2	E	F1	G1	G2	weight ca. [kg]	
								brake shoe	total
					-0,2				
160	50	8	10	110	35	22	14	0,27	0,35
200	65	8	12	132	43	24,5	16,5	0,42	0,55
250	80	8	14	16	46	27	17	0,67	0,85
320	100	8	18	20	60	32	22	1,11	1,45
400	120	12	22	250	72	38	26	1,75	2,65
500	160	12	32	310	93	48	34	2,99	5,05
630	200	12	36	380	116	53	38	5,54	8,65
710	220	12	40	430	131	63	51	8,81	10,44
800	250	12	45	480	151	68	52	10,50	15,48

1) standard brake pad brand COSID 131, other brake pad brands on request