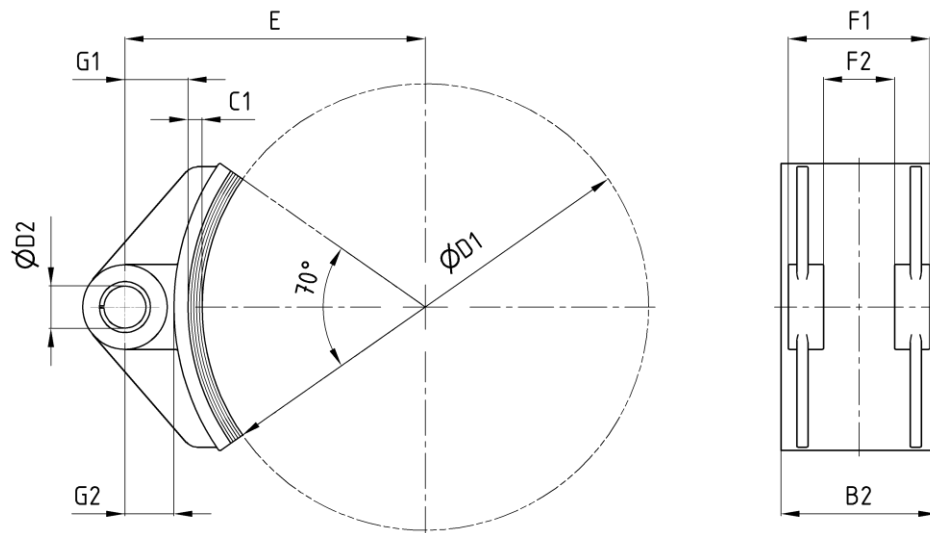


Brake Shoes

according to DIN 15435

edition 06/2022 | EN
page 1 / 1



Order example: brake shoe DIN 15435 - D1 - 131¹⁾ - type

dimension in [mm]

Data

| D1 | B2 | C1 | D2 | E | F1 -0,2 | F2 +0,2 | G1 | G2 | weight ca. [kg] ²⁾ | |
|-----|-----|----|----|-----|------------|------------|------|------|-------------------------------|-------|
| | | | | | | | | | brake shoe | total |
| 200 | 70 | 8 | 20 | 140 | 65 | 35 | 32 | 24 | 0,5 | 0,7 |
| 250 | 90 | 8 | 25 | 170 | 80 | 40 | 37 | 29 | 0,7 | 1,0 |
| 315 | 110 | 10 | 30 | 212 | 100 | 50 | 44,5 | 34,5 | 1,5 | 2,1 |
| 400 | 140 | 10 | 35 | 260 | 125 | 62 | 50 | 40 | 2,2 | 3,1 |
| 500 | 180 | 12 | 40 | 320 | 160 | 80 | 58 | 46 | 4,0 | 6,0 |
| 630 | 225 | 12 | 45 | 390 | 200 | 100 | 63 | 51 | 6,0 | 8,9 |
| 710 | 255 | 15 | 50 | 440 | 224 | 112 | 70 | 56 | 8,5 | 12,8 |

Type

- A1C: brake shoe made of cast aluminium with steel bushes, for glueing the brake pad (standard)
- A2C: brake shoe made of cast aluminium with steel bushes and rivet holes
- B1: brake shoe made of cast iron with steel bushes, for glueing the brake pad
- B2: brake shoe made of cast iron with steel bushes and rivet holes

1) standard brake pad brand COSID 131, other brake pad brands on request
 2) weight specification for cast aluminium, correction factor cast iron: 2,2