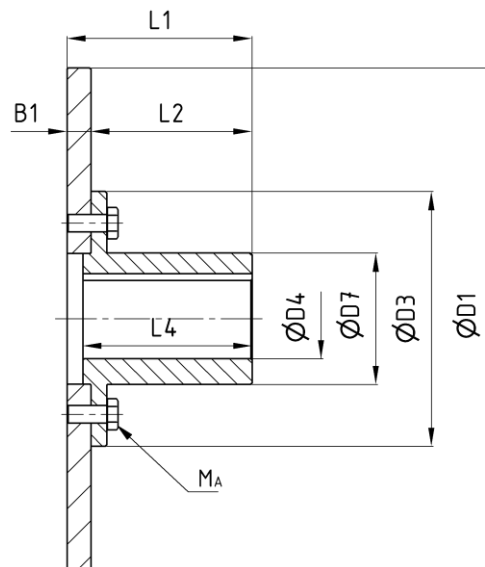


Hub with brake disc

 edition 06/2022 | EN
 page 1 / 1


Order example: BS NG - D1 - D4H7P1 - dy

dimensions in [mm]

Technical data

| Nominal size NG | M _B [Nm] | n _{max} ¹⁾ [1/min] | D1 | B1 | D3 | D4 ²⁾ | | D7 | L1 | L2 | L4 | J _{rot} [kgm ²] | m [kg] | M _A [Nm] |
|--------------------|------------------------|---|------|----|-----|------------------|-----|-----|-------|-------|-------|---|-----------|------------------------|
| | | | | | | min | max | | | | | | | |
| 40 | 1250 | 3600 | 355 | 30 | 134 | 20 | 55 | 77 | 191,5 | 161,5 | 166,5 | 0,37 | 27 | 65 |
| | | 3400 | 400 | | | | | | | | | 0,60 | 33 | |
| 63 | 2000 | 3600 | 355 | 30 | 150 | 25 | 65 | 91 | 191,5 | 161,5 | 166,5 | 0,38 | 28 | 65 |
| | | 3400 | 400 | | | | | | | | | 0,60 | 35 | |
| 100 | 3200 | 3350 | 400 | 30 | 186 | 30 | 75 | 105 | 186,5 | 156,5 | 166,5 | 0,62 | 37 | 120 |
| | | 3000 | 450 | | | | | | | | | 0,98 | 52 | |
| 160 | 7000 | 3200 | 400 | 30 | 212 | 30 | 85 | 119 | 186,5 | 156,5 | 166,5 | 0,65 | 40 | 285 |
| | | 3000 | 450 | | | | | | | | | 1,00 | 48 | |
| 250 | 10000 | 3000 | 450 | 30 | 240 | 40 | 95 | 130 | 227,5 | 197,5 | 207,5 | 1,04 | 52 | 285 |
| | | 2700 | 500 | | | | | | | | | 1,54 | 61 | |
| 400 | 14000 | 2400 | 560 | 30 | 275 | 50 | 105 | 145 | 227,5 | 197,5 | 207,5 | 2,44 | 78 | 558 |
| | | 2200 | 630 | | | | | | | | | 3,83 | 94 | |
| 630 | 20000 | 1900 | 710 | 30 | 320 | 60 | 120 | 165 | 232,5 | 202,5 | 212,5 | 3,96 | 102 | 558 |
| | | 1650 | 800 | | | | | | | | | 9,79 | 146 | |
| 1000 | 40000 | 1900 | 710 | 30 | 380 | 80 | 125 | 175 | 227,5 | 197,5 | 212,5 | 6,6 | 135 | 1410 |
| | | 1650 | 800 | | | | | | | | | 10,3 | 159 | |
| 1600 | 56000 | 1500 | 900 | 30 | 440 | 100 | 150 | 215 | 267,5 | 237,5 | 252,5 | 10,6 | 181 | 1410 |
| | | 1350 | 1000 | 42 | | | | | | | | 16,1 | 213 | |
| 2500 | 90000 | 1350 | 1000 | 42 | 510 | 100 | 170 | 240 | 279,5 | 237,5 | 252,5 | 35,8 | 355 | 2705 |
| | | 1100 | 1250 | | | | | | | | | 115,0 | 499 | |

1) Use at higher speeds on request

2) Finish bore size according to DIN EN ISO 286-1 H7, keyway according to DIN 6885-1 J59, balancing quality G 6,3 according to DIN ISO 1940-1 other diameters and fits on request