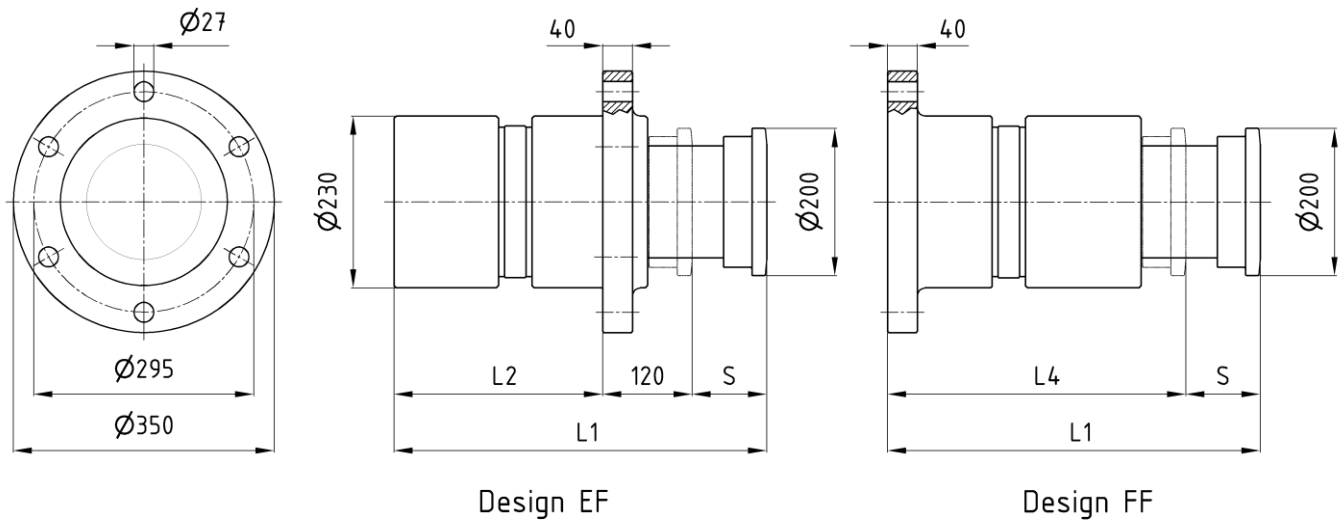


Hydraulic buffer KP 160

edition 06/2022 | EN

page 1 / 1

dimensions and technical data



Design EF

Design FF

Order example: KP 160 x S EF or FF

dimensions in [mm]

Technical data

Stroke S [mm]	Energy absorption		Buffer force $F_{p \max}$ [kN]	Static reset force		Angular deviation ³⁾		L1 [mm]	L2 [mm]	L4 [mm]	m [kg]
	W ¹⁾ [kJ/Hub]	W _h ²⁾ [kJ/h]		Start [kN]	End [kN]	EF [°]	FF [°]				
200	185	3600	800	9,5	85	4,2	2,6	790	470	590	148
300	218	5800	800		85	4,0	2,4	1080	660	780	178
400	290	7000	800		85	3,5	2,2	1370	850	970	208
500	363	8300	800		85	3,2	1,8	1660	1040	1160	240
600	436	9500	800		85	3,0	1,3	1950	1230	1350	270
700	509	10500	800		85	2,8	-	2240	1420	-	300
800	581	11500	800		85	2,6	-	2530	1610	-	329
900	638	12000	780		90	2,4	-	2820	1800	-	361
1000	690	13500	760		90	2,2	-	3100	1980	-	388
1100	740	14200	740		120	2,0	-	3300	2080	-	406
1200	785	15000	720		160	1,8	-	3500	2180	-	421
1300	827	15300	700		160	1,6	-	3780	2360	-	450
1400	865	15700	680		160	1,4	-	4050	2530	-	477
1500	900	16000	660		160	1,2	-	4330	2710	-	506
1600	930	17000	640		160	1,0	-	4600	2880	-	532

1) according to characteristic curve 1

2) at 30 °C ambient temperature

3) at maximum buffer force