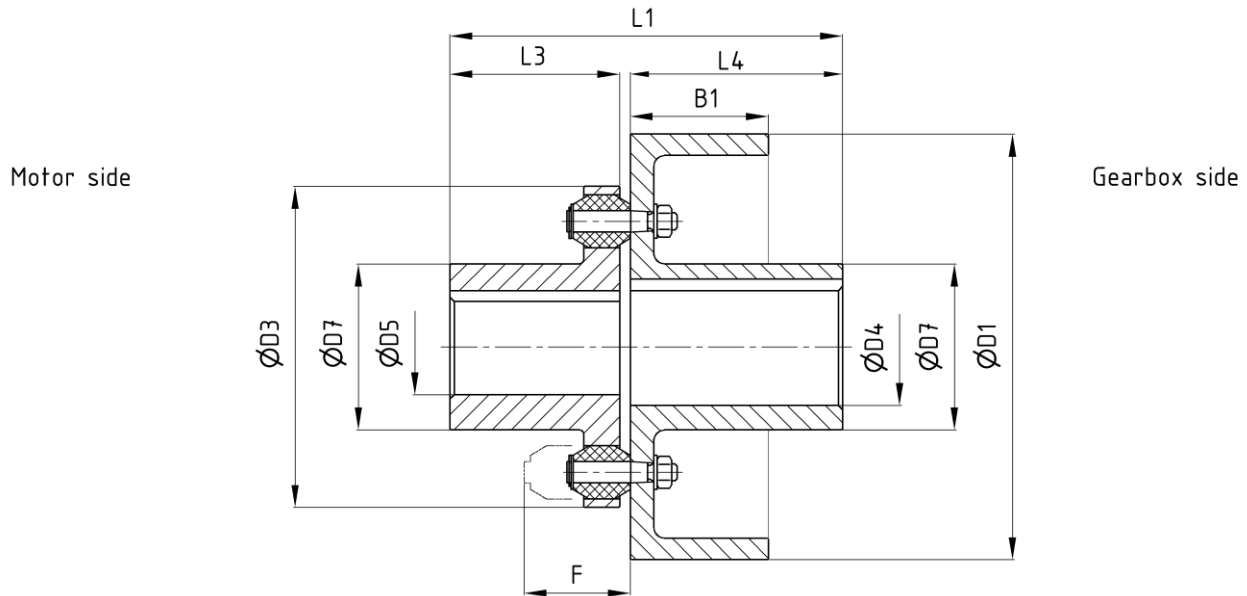


**Type C:**  
 for horizontal assembly

## Flexible pin coupling

with brake drum according to TGL 38558

edition 06/2022 | EN  
 page 1 / 1



Order example: EBK C NG - D1 - D4H7P1 - D5H7P1 - dy - TGL 38558

dimensions in [mm]

### Technical data

Nominal size NG	$M_B$ <sup>1)</sup> [Nm]		$n_{max}$ <sup>2)</sup> [1/min]	D1	B1	D3	D4 / D5 <sup>3)</sup>		D7	L1	L3	L4	F	$J_{rot}$ [kgm <sup>2</sup> ]	m [kg]	$M_A$ [Nm]
	$T_{kN}$	$T_{kmax}$					min	max								
16	160	240	3000	160	50	123	18	45	65	143	60	80	57	0,015	6,0	5,1
			3000	200	65							80		0,036	8,2	
			3000	250	80							80		0,085	11,5	
40	400	600	3000	200	65	151	22	55	78	185	80	100	70	0,048	12,6	16
			3000	250	80							100		0,103	16,6	
			3000	320	100							100		0,297	25,1	
100	1000	1500	3000	250	80	198	28	75	108	225	110	110	92	0,15	23,8	43
			3000	320	100							110		0,34	32,8	
			2400	400	125							140		0,99	47,8	
250	2500	3750	3000	320	100	250	42	95	145	285	140	140	107	0,51	45,0	43
			2400	400	125							170		1,21	67,0	
			1900	500	160							170		3,51	99,0	
630	6300	9500	1900	500	160	320	90	120	165	348	170	170	130	3,61	116	106
			1500	630	200							210		9,41	170	
1000	10000	15000	1350	710	225	380	90	130	175	408	170	225	150	16,66	227	370
1600	16000	24000	1350	710	225	440	90	160	210	445	210	225	165	17,40	254	370
2500	25000	37500	1200	800	250	510	110	180	240	470	210	250	210	33,30	405	450

1) torsion angle at  $T_{kN}$   $\varphi = 3^\circ \pm 1^\circ$

2) Use at higher speeds on request

3) Finish boring according to DIN EN ISO 286-1 H7, keyway according to DIN 6885-1 JS9, balancing quality G 6,3 according to DIN ISO 1940-1  
 Other diameters and fits on request

4) Standard: Buffer made from PUR 85 Shore A, nature, operating temperatur from  $-40^\circ\text{C}$  up to  $+80^\circ\text{C}$  / other materials on request