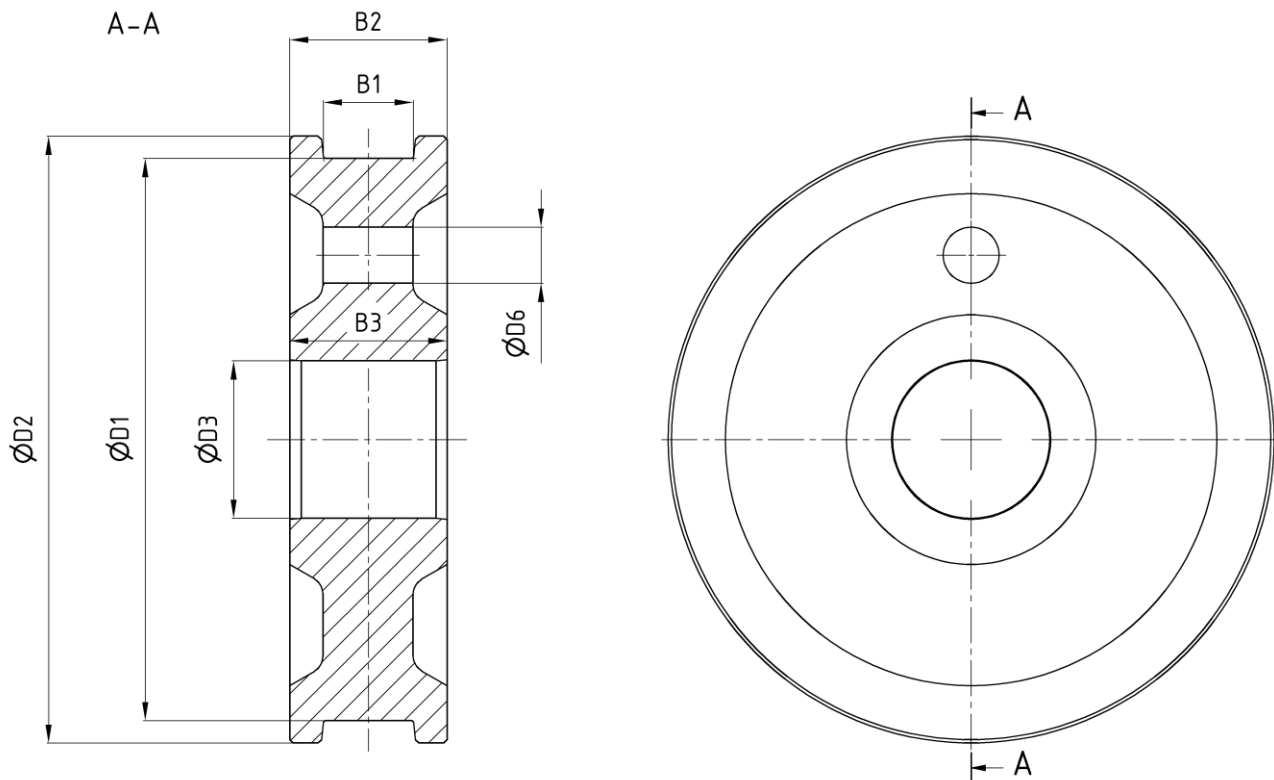


Wheel body

according to SHN 3302

 edition 06/2022 | EN
 page 1 / 1


Order example: Wheel body SHN 3302 - BHKE - D1 x B1

dimensions in [mm]

Data

D1	B1		D2	B2	D3	B3	D7	m [kg]
	min	max						
250	40	70	280	95	80	95	30	35
315	50	90	350	130	110	110	30	75
400	60	120	440	160	120	140	30	120
500	60	120	540	160	130	140	40	170
630	70	130	680	180	160	160	40	280
710	100	160	760	210	170	210	40	450
800	100	160	850	210	180	210	40	580

Design	
B	wide wheel
H	with wheel flange
G	without wheel flange
K	without wheel rim
E	without oilpress fit
D	with oilpress fit

- Wheel made from 42CrMo4 + QT
- maximum tensile strength: 950 - 1050 N/mm² (280 HV / 29 HRC)
- optional: Surface hardening of the running surface and the flange (530 HV / 51 HRC)
- Corrosion protection:
Synthetic resin primer 40 µm thick
mechanically machined surfaces are coated with Tectyl 506-EH

subject to change without notice