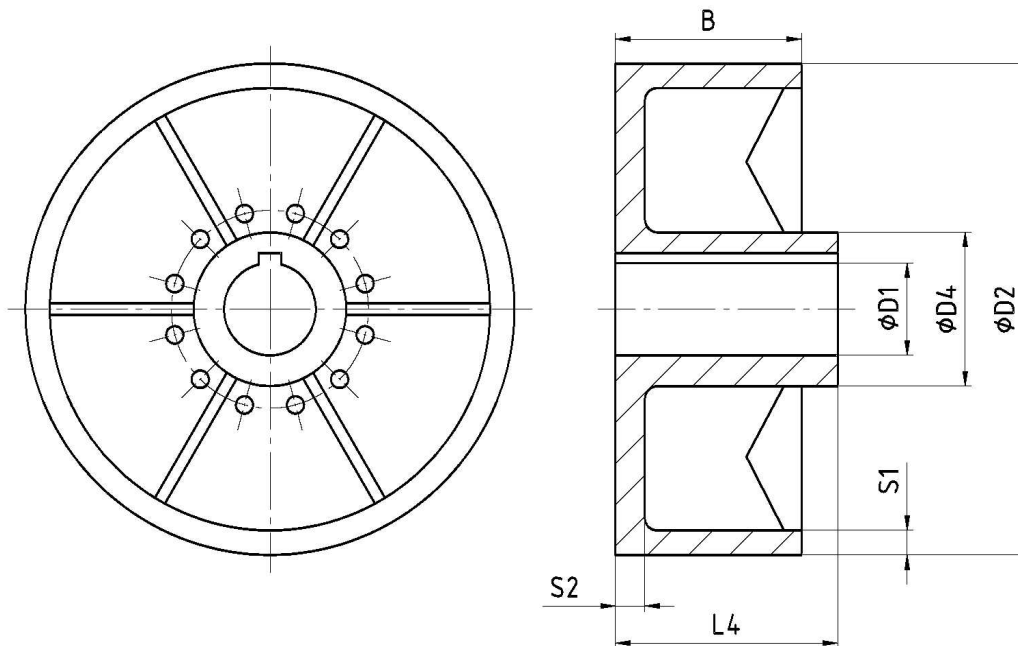


Brake drum according to TGL 38558

with hub, undivided, web on the face



nominal size	D2 ¹⁾	B	torque [Nm]		D1 predrilled	D1 ²⁾		D4 ³⁾	L4	S1	S2	moment of inertia ⁴⁾ J [kgm ²]	weight ⁴⁾ m [kg]	permissible speed ⁵⁾ n _{max} [rpm]	cushions and pins		
			T _{KN}	T _{Kmax}		min	max								nominal size	number	
16	160	50	160	240	14	18	45	65	80	7,5	11	0,013	3,4	3000	8	8	
	200	65															
	250	80															
40	200	65	400	600	20	22	55	78	100	10,0	11	0,042	6,7	3000	10	10	
	250	80															
	320	100															
100	250	80	1000	1500	25	28	75	108	110	10,0	18	0,121	16,0	3000	14	8	
	320	100							110	12,5	18		0,321	25,5			3000
	400	125							140	14,0	18		0,960	39,0			2400
250	320	100	2500	3750	35	42	95	145	140	12,5	20	0,410	27,0	3000	16	12	
	400	125							140	17,5	22		1,050	52,2			2400
	500	160							170	22,5	22		2,610	86,0			1900
630	500	160	6300	9500	45	90	120	165	170	22,5	20	3,100	94	1900	22	12	
	630	200							210	25,0	20		8,000	151			1500
1000	710	225	10000	15000	55	90	130	175	225	27,5	25	12,700	225	1350	30	10	
1600	710	225	16000	24000	65	90	160	210	225	27,5	25	14,400	259	1350	30	12	

- 1) ribs as of diameter ø500
- 2) finished boring to ISO-fit H7, keyway to DIN 6885 P1 fit JS9, other diameter on request
- 3) true for D1 max, in case of smaller boring a reduction is possible
- 4) true for D1 max
- 5) higher speed on request

dimensions in mm

Order example:

Brake drum 40 – 250 – 35H7P1 – dy TGL 38558
