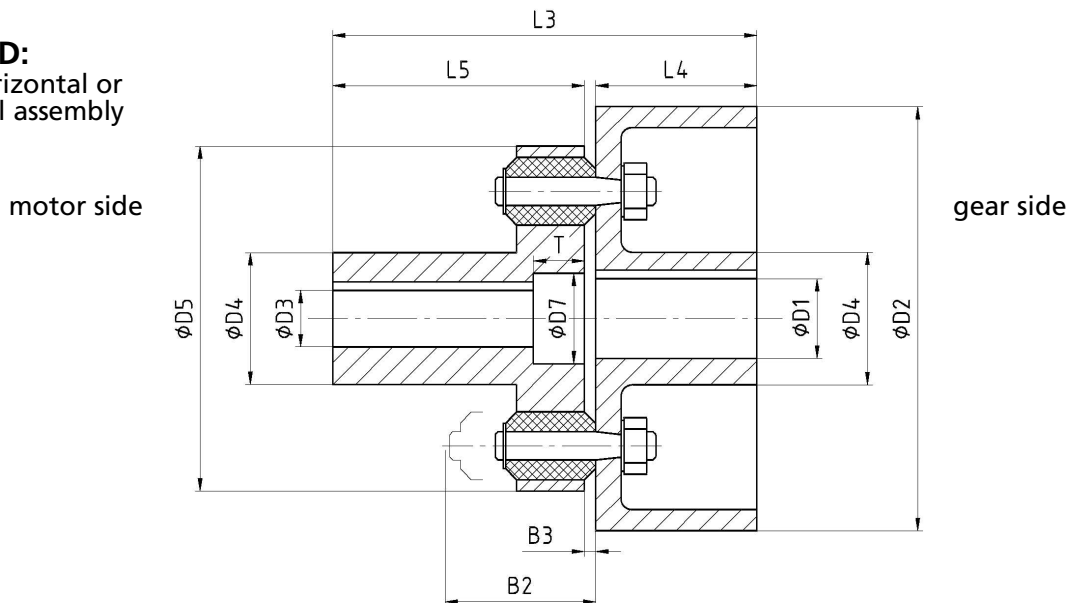


## Flexible pin coupling

with brake drum according to TGL 38558

**Type D:**  
 for horizontal or  
 vertical assembly


nominal size	D2	torque <sup>1)</sup> [Nm]		D1 <sup>2)</sup>		D3 <sup>2)</sup> max	D4 <sup>3)</sup>	D5	D7 max	T	L3	L4	L5	L6	B2	B3 (±25 %)	moment of inertia <sup>4)</sup> J [kgm <sup>2</sup> ]	weight <sup>4)</sup> m [kg]	permissible speed <sup>5)</sup> n <sub>max</sub> [rpm]	cushions and pins	
		T <sub>KN</sub>	T <sub>Kmax</sub>	min	max															nominal size	number
16	200 250	160	240	18	45	32	65	123	50	22	163	80	80	65 80	57	3	0,04 0,11	8 12	3000	8	8
40	200 250 320	400	600	22	55	38	78	151	64	28	215	100	110	65 80 100	70	3	0,05 0,11 0,32	12 15 21	3000	10	10
100	250 320 400	1000	1500	28	75	60	108	198	92	35	255 255 285	110 110 140	140	80 100 125	92	5	0,15 0,39 1,04	23 29 46	3000 3000 2400	14	8
250	320 400 500	2500	3750	42	95	80	145	250	119	40	315 315 345	140 140 170	170	100 125 160	107	5	0,49 1,36 3,66	48 72 103	3000 2400 1900	16	12
630	500 630	6300	9500	90	120	90	165	320	146	45	388 428	170 210	210	160 200	130	8	6,58 10,25	115 156	1900 1500	22	12
1000	710	1000 0	15000	90	130	100	175	380	159	45	443	225	210	225	150	8	18,80	245	1350	30	10
1600	710	1600 0	24000	90	160	110	210	440	178	45	445	225	210	225	165	10	19,54	255	1350	30	12

 1) torsion angle at T<sub>KN</sub> f=3°±1°

2) finished boring to ISO-fit H7, keyway to DIN 6885 P1 fit JS9, other diameter on request

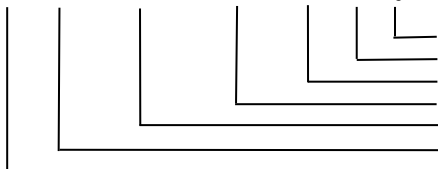
3) true for D1 max, in case of smaller boring a reduction is possible

4) true for D1 max, in consideration of buffers and pins

5) higher speed on request

dimensions in mm

Order example:

**EBK D 40 – 250 – 35H7P1 – 40H7P1 – 64 x 28 - dy TGL 38558**


Balance state G 6,3 according to DIN ISO 1940-1

Length T

Diameter D7

Boring, tolerance zone and keyway (hub buffer side)

Boring, tolerance zone and keyway (hub pin side)

Nominal diameter of the brake drum D2

Nominal size

**Material of standard type**

 Hub buffer side, hub pin side: C35 or G552  
 Brake drum: according to DIN 15437  
 Pin: C35, 34CrMo4, 34Cr4  
 Buffer: PUR (Elastopal)65±5 Shore A  
 PUR (Elastollan)80±2 Shore A

In special case of operation or by customer request it is possible to apply other material.