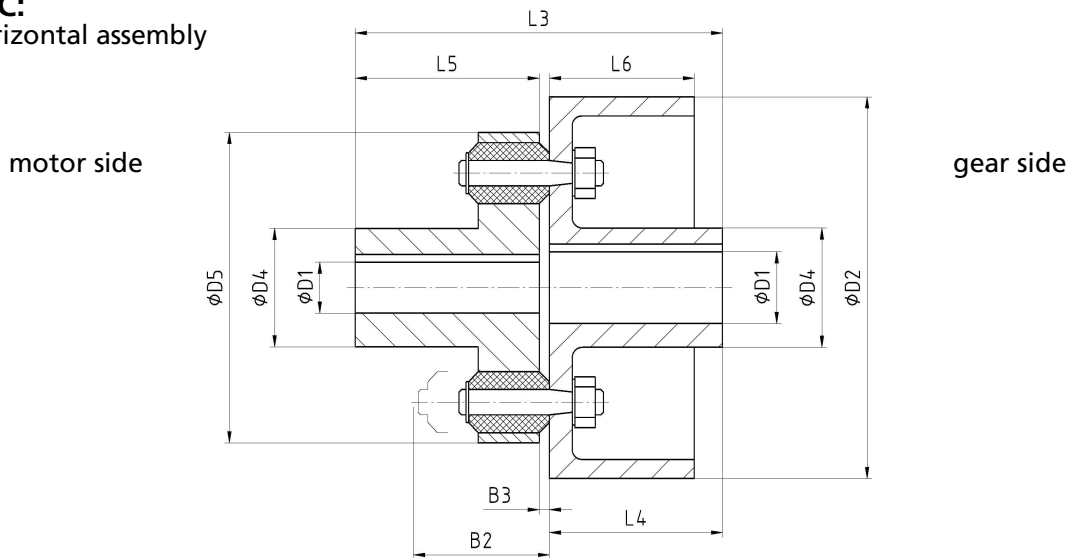


# Flexible pin coupling

with brake drum according to TGL 38558

**Type C:**  
 for horizontal assembly


nominal size	D2	torque <sup>1)</sup> [Nm]		D1 <sup>2)</sup>		D4 <sup>3)</sup>	D5	L3	L4	L5	L6	B2	B3 (±25 %)	moment of inertia <sup>4)</sup> J [kgm <sup>2</sup> ]	weight <sup>4)</sup> m [kg]	permissible speed <sup>5)</sup> n <sub>max</sub> [1/min]	cushions and pins	
		T <sub>KN</sub>	T <sub>Kmax</sub>	min	max												nominal size	number
16	200 250	160	240	18	45	65	123	143	80	60	65 80	57	3	0,04 0,09	8 12	3000	8	8
40	200 250 320	400	600	22	55	78	151	185	100	80	65 80 100	72	5	0,06 0,11 0,31	12 16 25	3000	10	10
100	250 320 400	1000	1500	28	75	108	198	225 225 255	110 110 140	110	80 100 125	92	5	0,18 0,37 1,02	24 33 48	3000 3000 2400	14	8
250	320 400 500	2500	3750	42	95	145	250	285 285 315	140 140 170	140	100 125 160	107	5	0,52 1,22 3,52	45 67 99	3000 2400 1900	16	12
630	500 630	6300	9500	90	120	165	320	348 388	170 210	170	160 200	130	8	3,64 9,44	116 170	1900 1500	22	12
1000	710	1000 0	15000	90	130	175	380	408	225	170	225	150	8	16,69	227	1350	30	10
1600	710	1600 0	24000	90	160	210	440	445	225	210	225	165	10	17,40	254	1350	30	12
2500	800	2500 0	37500	110	180		510	470	250	210	250	210	10	33,30	405	1200	42	10

 1) torsion angle at T<sub>KN</sub> f=3°±1°

2) finished boring to ISO-fit H7, keyway to DIN 6885 P1 fit JS9, other diameter on request

3) true for D1 max, in case of smaller boring a reduction is possible

4) true for D1 max, in consideration of buffers and pins

5) higher speed on request

dimensions in mm

**Material of standard type**

Hub buffer side, hub pin side:

Brake drum:

Pin:

Buffer:

C35 or G52

according to DIN 15437

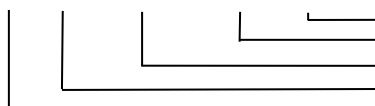
C35, 34CrMo4, 34Cr4

PUR (Elastopal)65±5 Shore A

PUR (Elastollan)80±2 Shore A

In special case of operation or by customer request it is possible to apply other material.

Order example:

**EBK C 40 – 250 – 35H7P1 – 40H7P1 – dy TGL 38558**


Balance state G 6,3 according to DIN ISO 1940-1

Boring, tolerance zone and keyway (hub buffer side)

Boring, tolerance zone and keyway (hub pin side)

Nominal diameter of the brake drum D2

Nominal size