

Hydraulic buffer KP 50

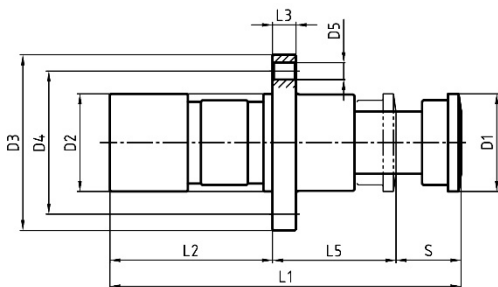
dimensions and technical data

 edition 10/19 | EN
 page 1/1

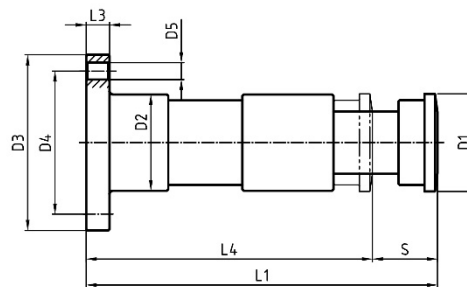
PERFORMANCE DATA

piston Ø [mm]	stroke s [mm]	max. absorbing capacity/ stroke) ¹ [kJ/stroke]	max. absorbing capacity/ hour) ² [kJ/h]	max. buffer-force [kN]	static restoring force		max. angle divergence α) ³		weight ca. [kg]
					start of stroke[kN]	end of stroke[kN]	FF [°]	EF [°]	
50	50	4,5	400	100	1	5	4,5	5,5	6,6
	100	9,0	650	100		6	3,2	4,0	8,2
	150	13,6	950	100		6	2,1	2,9	9,8
	200	18,1	1250	100		7	1,5	2,3	11,2
	250	22,7	1600	100		7	1,3	2,1	12,6
	300	27,2	1900	100		7	1,2	1,9	14,0
	350	28,6	2000	90		7	1,1	1,8	15,5
	400	29,0	2100	80		7,5	1,0	1,7	16,9
	450	28,6	2200	70		7,5	-	1,6	18,2
	500	27,2	2200	60		7,5	-	1,5	19,5

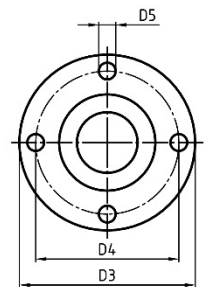
¹ data referred to characteristic line 1 ² for 30°C ambient temperature ³ for maximal buffer force



design EF



design FF



DIMENSIONS

piston Ø	stroke s	D1	D2	D3	D4	D5	L1	L2	L3	L4	L5
50	50	75	75	135	110	13	270	125	18	220	95
	100						410	215		310	
	150						550	305		400	
	200						685	390		485	
	250						825	480		575	
	300						965	570		665	
	350						1105	660		755	
	400						1235	740		835	
	450						1375	830		-	
	500						1515	920		-	

dimensions in mm